



UNIVERSITY OF WISCONSIN-MADISON

University of Wisconsin-Superior

University of Wisconsin-Milwaukee

University of Illinois at Chicago

University of Toledo

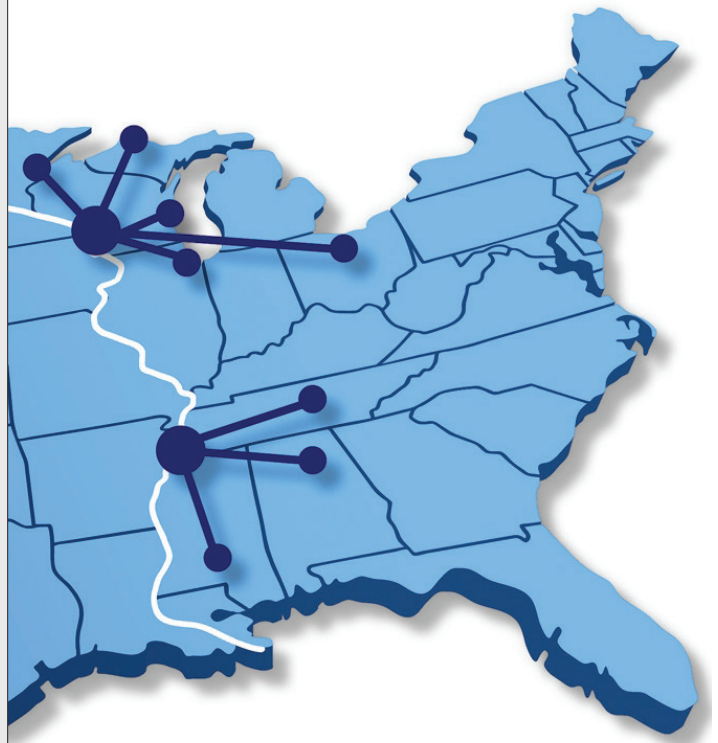
Michigan Technological University

UNIVERSITY OF MEMPHIS

Vanderbilt University

University of Alabama in Huntsville

University of Southern Mississippi



CFIRE

**Making Multimodal Freight
Systems Work for Economic
Recovery and Quality of Life**

About CFIRE

The National Center for Freight and Infrastructure Research and Education (CFIRE) is a Tier 1 University Transportation Center (UTC) funded by the US Department of Transportation (USDOT) Research and Innovative Technology Administration (RITA).

Theme

The theme of the CFIRE consortium is ***Making Multimodal Freight Systems Work for Economic Recovery and Quality of Life.***

Hubs

The CFIRE consortium is structured as a unique collaborative framework: northern and southern hubs. Both northern and southern hubs help coordinate education, training, and technology transfer efforts. Research is done collaboratively across both regions, but dissemination of research results is managed by the hub institutions.



Northern Hub

The northern hub is led by University of Wisconsin-Madison, and includes partners at the University of Wisconsin-Superior, the University of Wisconsin-Milwaukee, the University of Illinois at Chicago, Michigan Technological University, and the University of Toledo.

Southern Hub

The southern hub is led by the University of Memphis and includes Vanderbilt University, the University of Southern Mississippi, and the University of Alabama in Huntsville.

Budget

The CFIRE consortium's annual budget is approximately \$3.5 million.

Consortium Partners



The University of Wisconsin-Madison is the lead institution of the CFIRE consortium and of the consortium's northern hub. UW-Madison is a leading freight research center that also facilitates the Mid-America Freight Coalition and helps educate the next generation of transportation professionals in the Transportation Management and Policy program.



The University of Wisconsin-Milwaukee's Center for Urban Transportation Studies (CUTS) shares its strengths in travel demand forecasting and pavement and bridge design with the CFIRE consortium. CUTS is a worldwide leader in freight forecasting.



The University of Wisconsin-Superior's Transportation and Logistics Research Center (TLRC) has regional freight planning expertise in marine, rail, and intermodal transportation. Their leadership role in the Great Lakes Maritime Research Institute (GLMRI) enables them to provide a myriad of comprehensive research perspectives on maritime freight issues.



The University of Illinois-Chicago's Urban Transportation Center (UTC) specializes in freight demand modeling and freight city logistics as part of a larger organizational framework that encompasses transit planning research, work on transportation funding and financing, and other areas.



The Intermodal Transportation Institute (ITI) at the University of Toledo develops technology-enabled intermodal transportation systems and supply chains. UT's Center for Geographic Information Sciences and Applied Geographics (GISAG) develops specialized GIS software for a variety of transportation applications.



The Michigan Tech Center for Science, Math & Environmental Education offers a wide variety of programs to enhance the teaching and learning of science, mathematics, and environmental education. The Center's goal is to provide quality student, teacher and community programming in science, math, engineering and technology (STEM). MTU's predominant role within the CFIRE consortium is education and outreach.



The University of Memphis is the lead institution of the CFIRE consortium's southern hub. The University of Memphis's Intermodal Freight Transportation Institute (IFTI) is a nationally recognized leader in transportation policy, modeling, simulation, green technologies, and sustainability research.



Vanderbilt University's Vanderbilt Center for Transportation Research (VECTOR) emphasizes the integration of transportation engineering, planning, and management. VECTOR implements ground-breaking applications of information technology like ITS, GPS, and GIS into its freight research that covers all modes of transportation.



The University of Alabama in Huntsville specializes in taking federal databases and calibrating them by using local industry knowledge to make freight forecasts and add value to publicly available information. UAH researchers are redefining the future of freight travel demand forecasting.



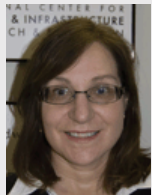
The University of Southern Mississippi's Center for Logistics, Trade, and Transportation (CLTT) provides a competitive advantage to Gulf Coast industry and government agencies through its multidisciplinary research approach. The CLTT encompasses the movement of goods and people (logistics) through the most efficient means (intermodal transportation) to achieve economic development (trade).

Research Initiatives

CFIRE engages in innovative research with the aim of advancing freight knowledge to better meet current and future needs. The CFIRE consortium conducts research projects across a wide range of freight-related topics:

- RI-01 A Multi-Modal Freight Safety, Security, and Environmental Routing Tool
- RI-02 Making Freight-Centric Communities More Livable: Measuring the Impact of Advanced Technologies
- RI-03 Non-Destructive Technologies for Monitoring and Condition Assessment to Support Safety, Maintenance Programming, and Cost Allocation
- RI-04 Mining Automatic Identification Systems (AIS) Data for Improved Vessel Trip Analysis Capabilities
- RI-05 Estimating the Effects of Extreme Weather on Transportation Infrastructure
- RI-06 Realigning Multimodal Freight Networks in Response to International Capacity Expansion
- RI-07 Enhancing Rail Connectivity to Underserved Rural Communities
- RI-08 Beneficial Use of Dredging Materials from Harbors and Channels

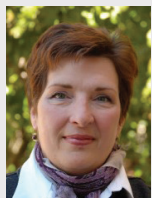
Staff - Northern Hub



Teresa Adams, PhD
CFIRE Director
adams@engr.wisc.edu



Steve Wagner
Communications
Manager
swagner@engr.wisc.edu



Lisa Beneker
Program Assistant
beneker@engr.wisc.edu



Greg Waidley, Jr.
Research and
Education Manager
gwaidley@engr.wisc.edu



Maria Hart
Researcher
mhart@engr.wisc.edu



Ben Zietlow
Goeconomist
bzietlow@wisc.edu



Ernie Perry, PhD
MAFC Program Director
ebperry@wisc.edu

cfire.wistrans.org
cfire@engr.wisc.edu

Staff - Southern Hub



Martin Lipinski, PhD
IFTI Director-Emeritus
mlipinski@memphis.edu



Dan Pallme
IFTI Interim Director
dpallme@memphis.edu



Sean Ellis
IFTI Associate Director
scellis1@memphis.edu



Kimberly Grantham
Marketing Manager
kmgmrthm@memphis.edu